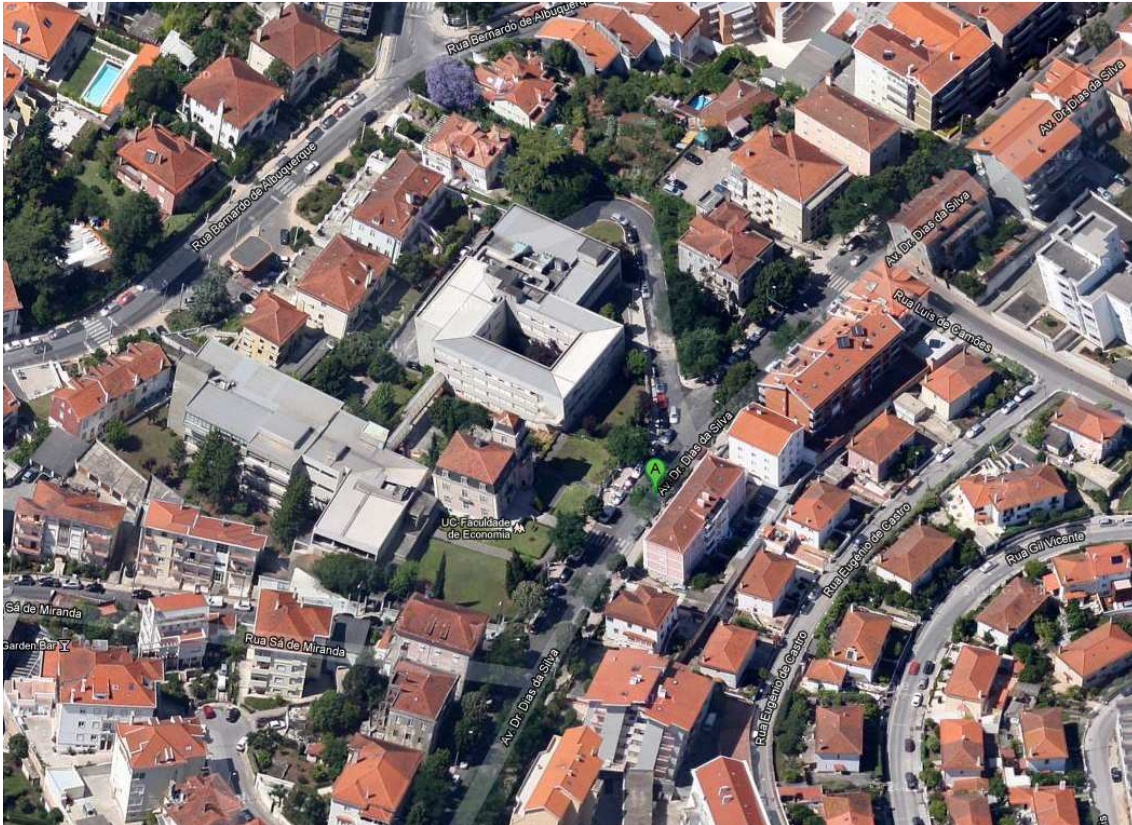


# How to get to FEUC

*How to arrive to the FE-UC (Faculty of Economics) Auditorium?*

Location: Av. Dias da Silva,165 (Coimbra)



## GPS:

- Decimal degree : 40.214698 -8.408988
- Degree, min sec: 40°12'52.94"N ; 8°24'32.43"W

## Public Transport:

- Taxi: (+ 351) 239 499 090
- Bus lines: 4 - 37 - 42 - 103

## Weather (estimated):

MON 8	TUE 9	WED 10	THU 11	FRI 12
27°C 14°C	21°C 16°C	19°C 10°C	18°C 10°C	17°C 10°C
22%	41%	35%	31%	41%

More info at <http://www.meteo.pt/en/index.html>

# How to arrive COIMBRA

## Getting to Portugal by Plane:

Fly to Lisbon (to the South) or to Oporto (to the North) and then take transportation to Coimbra.

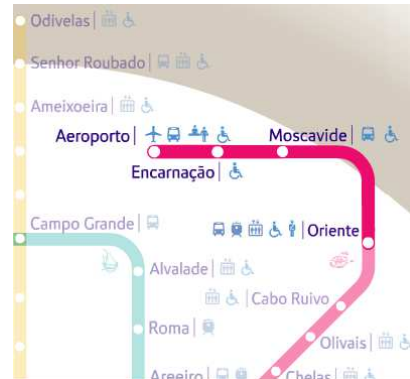
## Transportation:

### From Lisboa to Coimbra:

#### 1) By train:

##### a) (Reaching train Station)

- i) If you are at the airport, take metro in there, to Oriente (which is the name of the train station too) – 3 stops.
- ii) If you are at the city centre (or somewhere else), take a taxi to Santa Apolónia station or Oriente station.



##### b) (Going to Coimbra by train)

- i) Oriente Station: in the 1<sup>st</sup> floor of the Oriente station, buy a ticket to Coimbra-B, for Intercidades(Intercity) train or Alfa Pendular.
- ii) Santa Apolonia Station: buy a ticket to Coimbra-B, for Intercidades(Intercity) train or Alfa Pendular.

Note: You can check train schedule at <http://www.cp.pt>  
(Change language to ENG in the right upper corner, and then choose Timetables and Prices in the right side of page).  
*You can use this QR code too, for direct link*



##### c) (Arriving at Coimbra)

- i) Step out of the train in “Coimbra-B” and take a taxi to your hotel.

### Useful Info:

Metro: 1,5€ + 0.50€ rechargeable metro card emission

Train (Type, Price in Confort / Turistic , Travel time):

Alfa Pendular: 32.50€ / 22.50€ ~1H35

Intercidades: 24.00€ / 19.00€ ~1H55

#### 2) By car:

- a) Take the highway A1 (Autoestrada A1-Norte) towards Porto.
- b) After around 190Km take the exit Coimbra-Sul (exit 12)
- c) After exit the highway, continue driving to Coimbra about 3Km

Travel time: around 2H10.

Toll costs: 13.05€

Distance: ~205Km

## From Oporto to Coimbra:

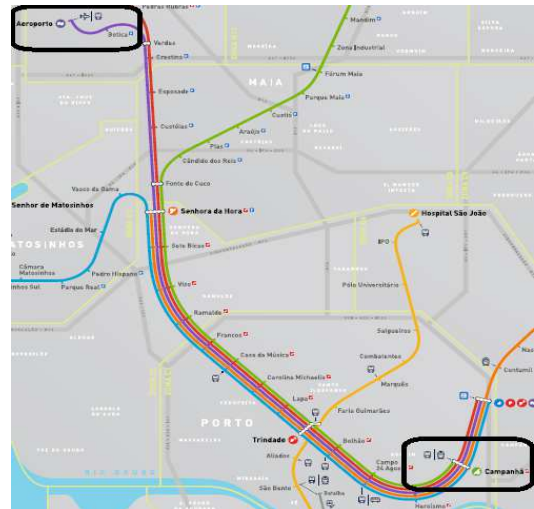
### 1) **By train:**

#### a) (Reaching train Station)

- i) If you are at the airport, take metro in there, to Oporto-Campanhã station.
- ii) If you are at the city centre (or somewhere else), take a taxi or metro to Oporto-Campanhã station.

#### b) (Going to Coimbra by train)

- i) Oporto-Campanhã Station: buy a ticket to Coimbra-B, for Intercidades(Intercity) train or Alfa Pendular.



Note: You can check train schedule at <http://www.cp.pt> (Change language to ENG in the right upper corner, and then choose Timetables and Prices in the right side of page).  
*You can use this QR code too, for direct link*



#### c) (Arriving at Coimbra)

- i) Step out of the train in “Coimbra-B” and take a taxi to your hotel.

### Useful Info:

Metro: 1,15€

Train (Type, Price in Confort / Turistic , Travel time):

Alfa Pendular: 21.50€ / 16.50€ ~0H59

Intercidades: 17.00€ / 13.00€ ~1H07

### 2) **By car:**

- a) Take the highway A1 (Autoestrada A1-Norte) towards Lisboa.
- b) After around 110Km take the exit Coimbra-Norte(exit 13)
- c) After exit the highway, 2Km ahead of Toll, take IC2 to Coimbra and drive about 8Km

Travel time: around 1H35.

Toll cost: 6.55€

Distance: ~120Km